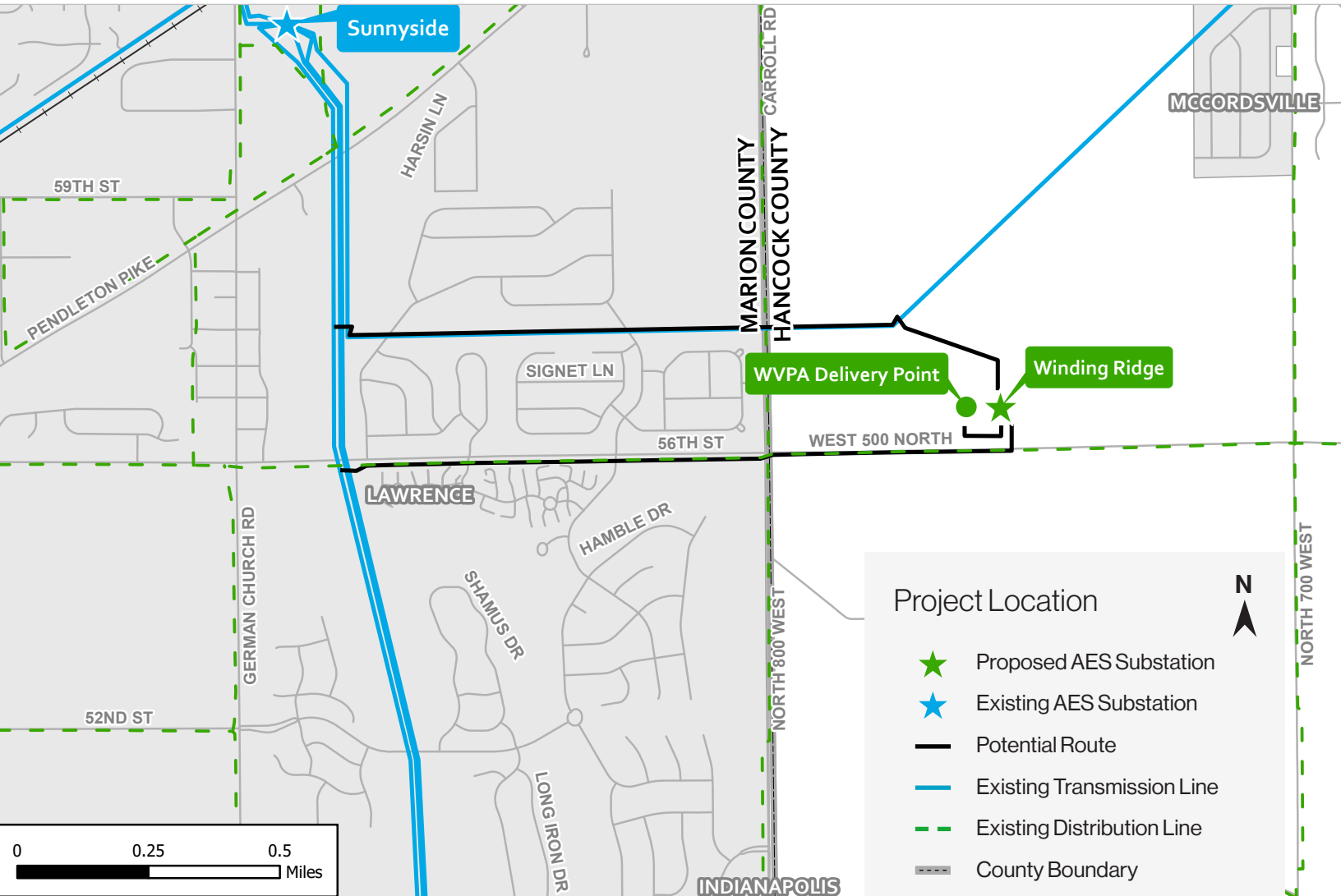


Winding Ridge Transmission and Substation Interconnection Project

AES Indiana is investing in the electric transmission system to help improve reliability, meet increased demand and provide operational flexibility for all residents within and surrounding Indianapolis' NE territory. The improvement project involves building approximately 2.7 miles of new transmission lines and a new substation.*



What

The project includes:*

- One new substation (Winding Ridge)
- Building two new 138 kilovolt (kV) transmission lines
- WVPA Delivery Point

*AES Indiana only. Contact WVPA for distribution details.

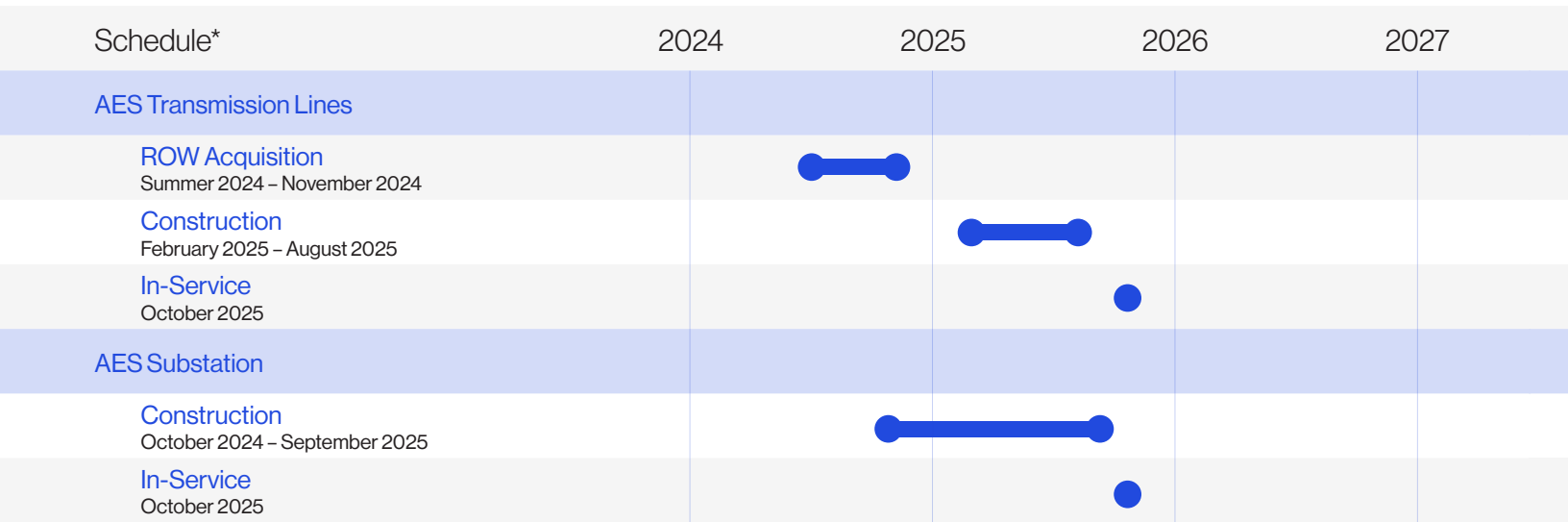
Why

AES Indiana has received a request from Wabash Valley Power Alliance (WVPA) to prepare Hancock County for ongoing growth and expansion in the Pleasant Acres area. Additionally, the rapid commercial and residential growth in AES Indiana's NE quadrant is putting increased strain on the Sunnyside & German Church Substations. In response to these needs, we are initiating the construction of a new transmission line and substation. The primary objective is to serve as a pivotal delivery point for WVPA and Ninestar to meet the surging energy demands in Marion and Hancock Counties, ensure a stable power supply and alleviate stress on the current substations. Our commitment is to deliver sustainable, reliable power solutions, thereby enhancing grid reliability and facilitating regional growth.

Where

- Marion County
- Hancock County
- City of Lawrence
- Buck Township

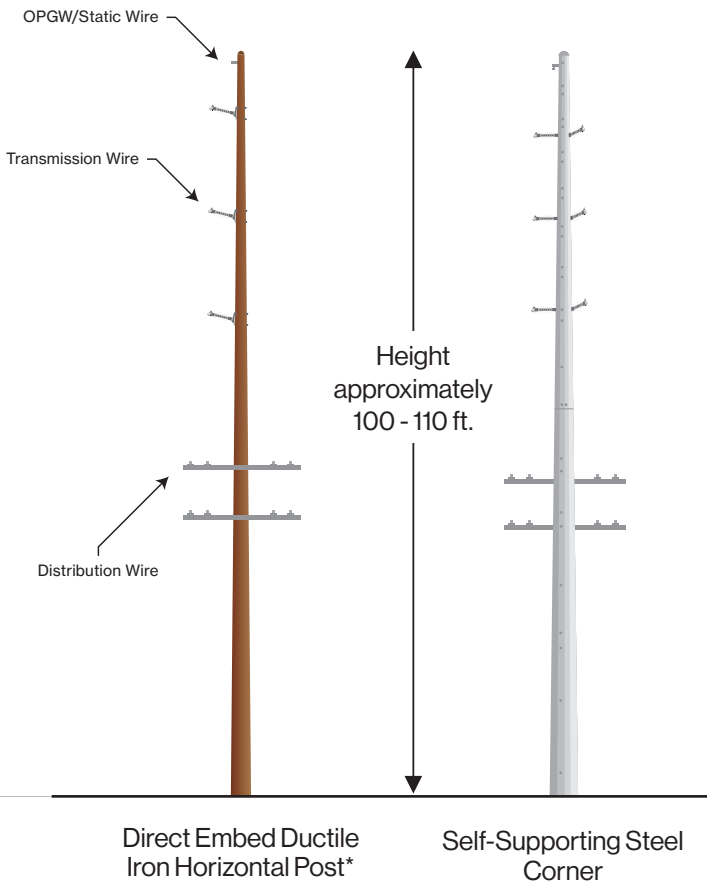
Winding Ridge Transmission and Substation Interconnection Project



*Schedule is preliminary and subject to change.

Typical Structures

The project involves the use of both steel and ductile iron poles, with heights ranging from approximately 100 - 110 feet.



*Final structure height, structure type and ROW easement width may vary.

Where Can I Get More Information?

AES Indiana values your input.

Please visit the project website or call the number below to leave feedback.

www.aesindiana.com/winding-ridge-project

317-261-5993



Company Overview

- Serving 521,000 customers across 10 Counties
- Approximately 9,100 miles of transmission, distribution and underground lines
- 528 square mile service territory
- Employing more than 1,200 people

AES Indiana invests in our equipment and technology to create a stronger, safer and more efficient electrical system. We know our customers depend on us to provide the electricity they need to power their lives.

www.aesindiana.com



September 2024

